

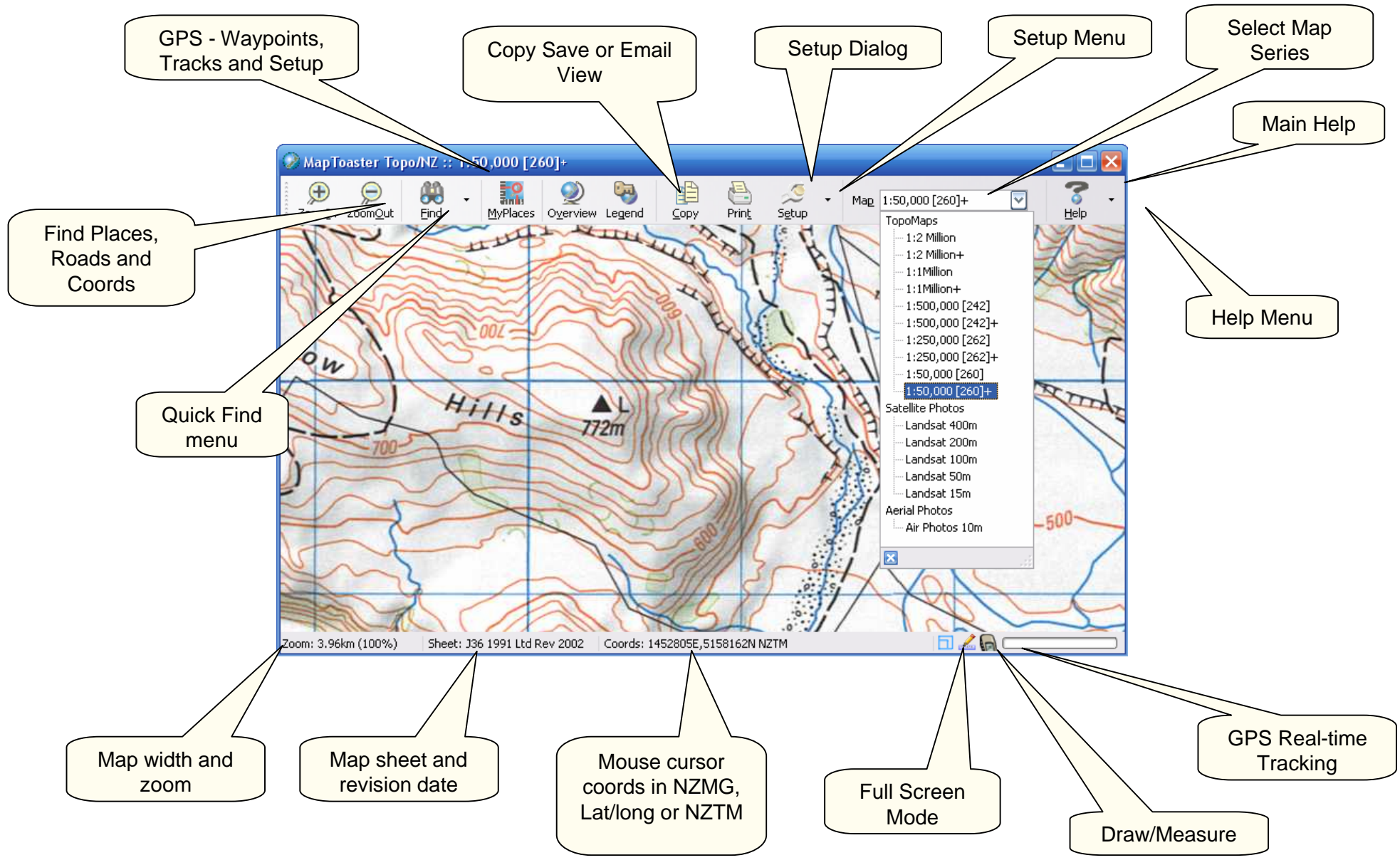


MapToasterTopo
Visual Introduction

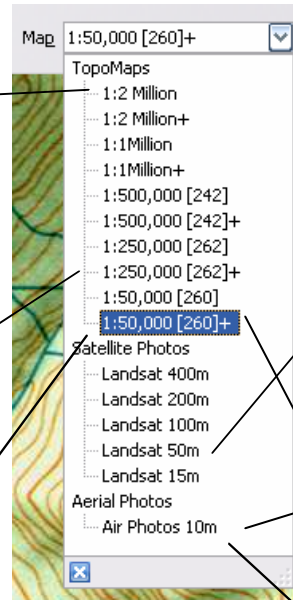
Software by
INTEGRATEDMAPPING

www.maptoaster.com

© 2005 Integrated Mapping Ltd



MAIN WINDOW



Aerial with transparent topomap overlay. Also works on satellite imagery

Drag slider down for clearer map

MAPS / AERIALS / SATELLITE

Find

Search for Placename | Search for Road Name | Go To Map Reference

Place Name: akaroa [Find]

All within: All of New Zealand [v] km

Category	Name
Town	Akaroa
Locality	Akaroa
Homestead	Akaroa
Bay/inlet	Akaroa Harbour
Bay/inlet	Akaroa Harbour
Point	Akaroa Head
Homestead	Karakaroa
Range	PAKAROA RANGE
Stream	Pouakaroa Stream
Point	Te Akaroa (West Entry Point)
Homestead	Wakaroa
Homestead	Wakaroa

Found 14 matching names

[Go There] [Cancel]

Sliding match on search name

Find all cross-roads

Go to coords, map sheet or 6-digit map reference

Marker shows selected location

Limit search to nearby locations

Click in header to sort list

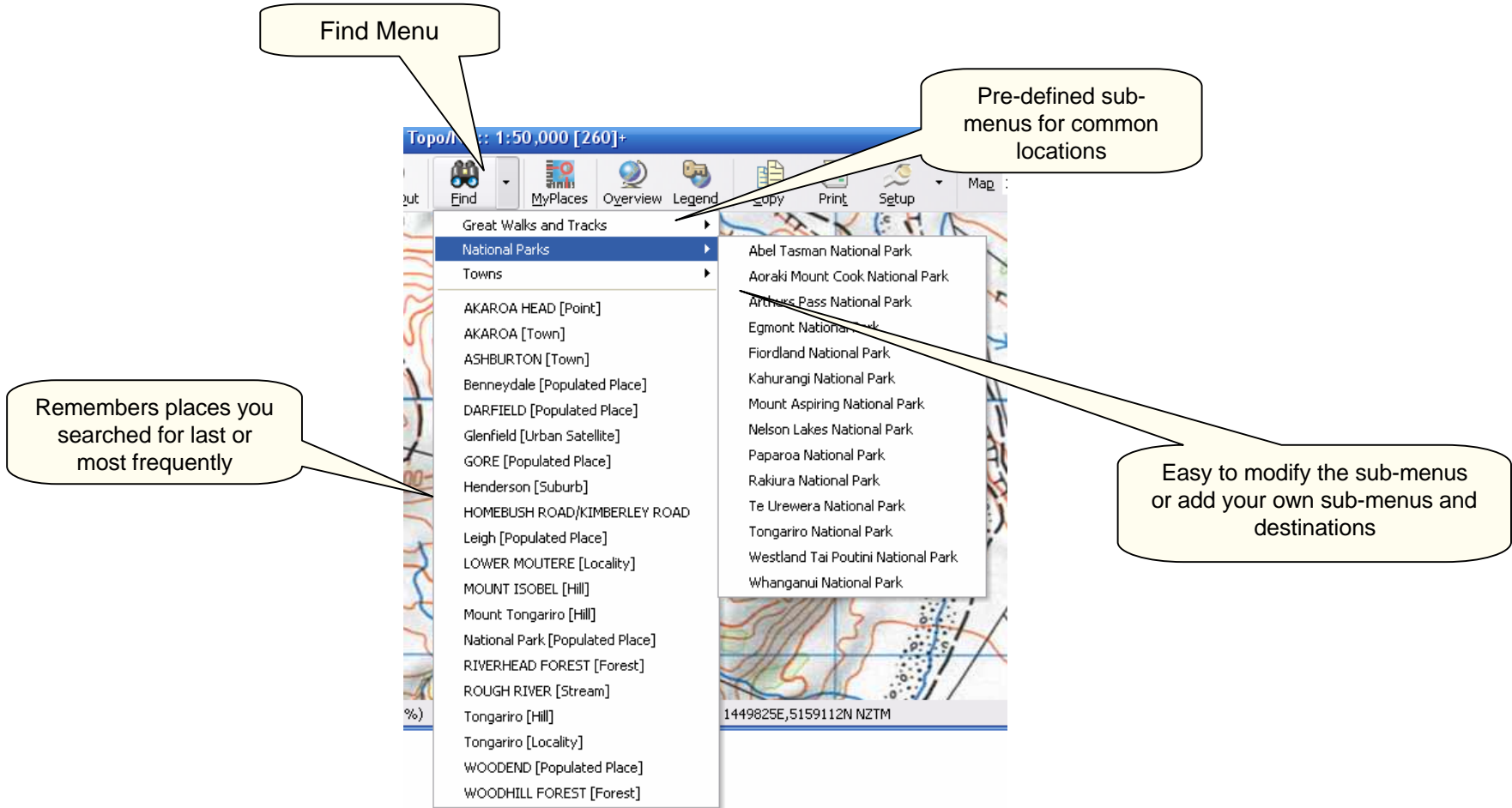
Shows type of place

Go to NZMS 260 sheet name

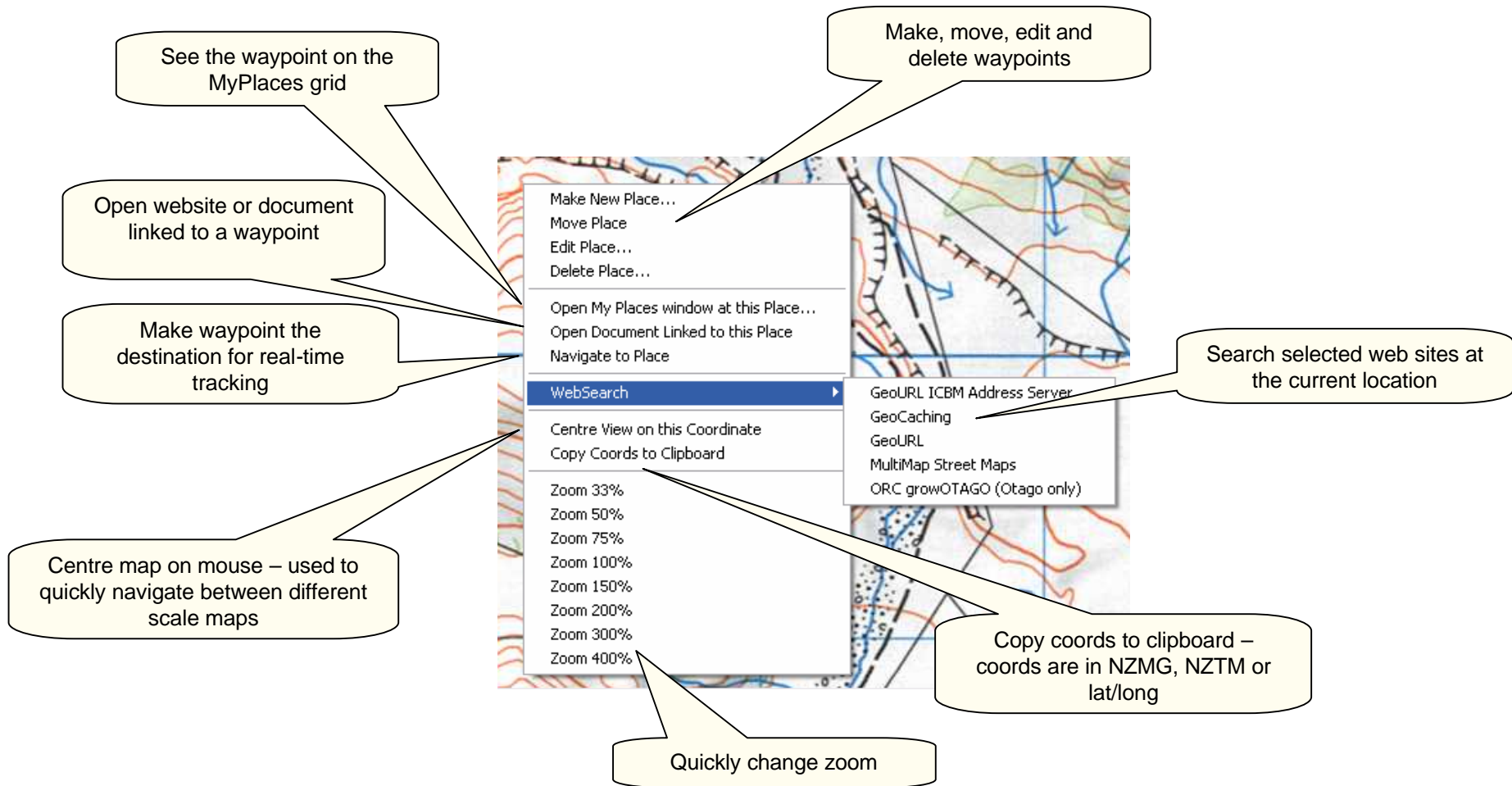
Enter NZMG, lat/long (ddd.ddd or dd mm.mmm) – software figures it out automatically

Enter 6-digit map reference

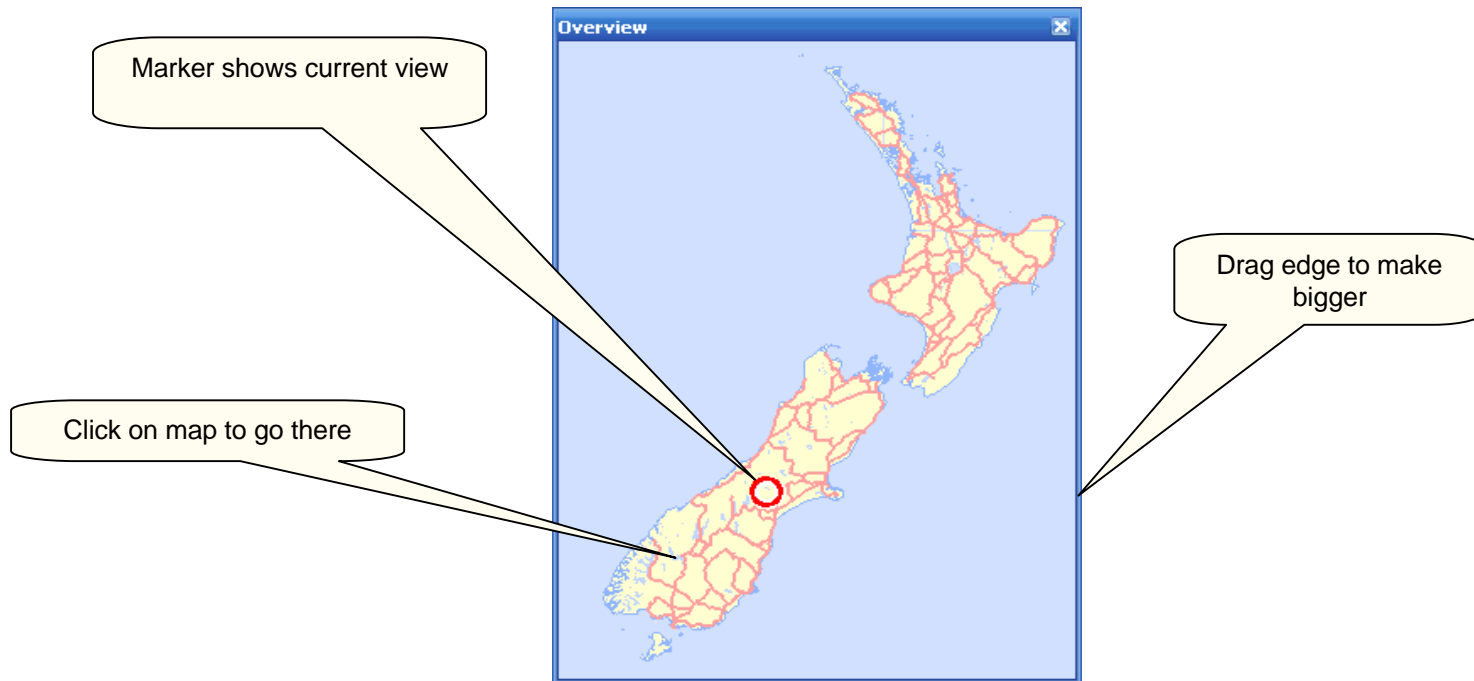
FIND DIALOG



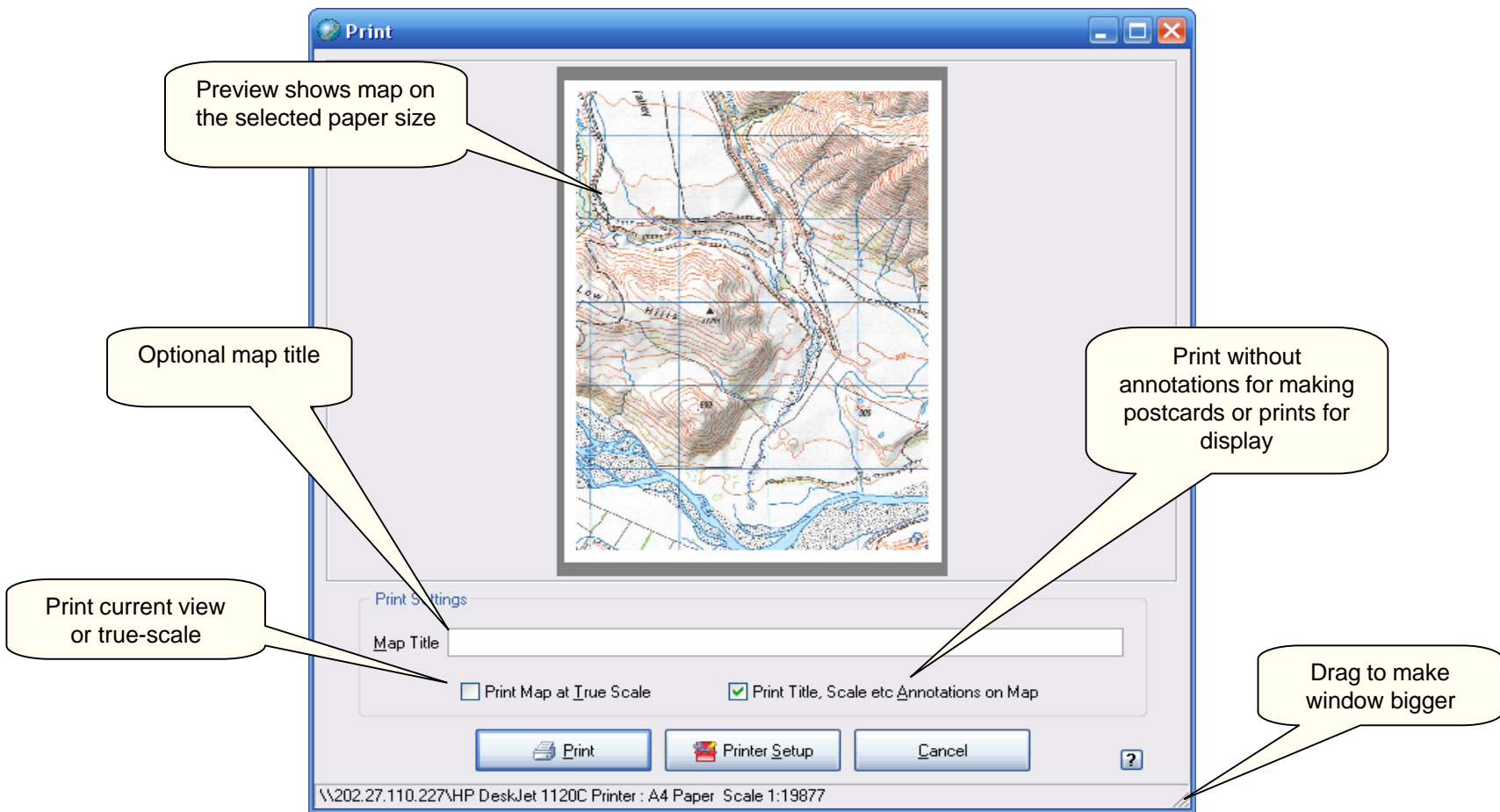
FIND MENUS



MAP RIGHT-CLICK MENU



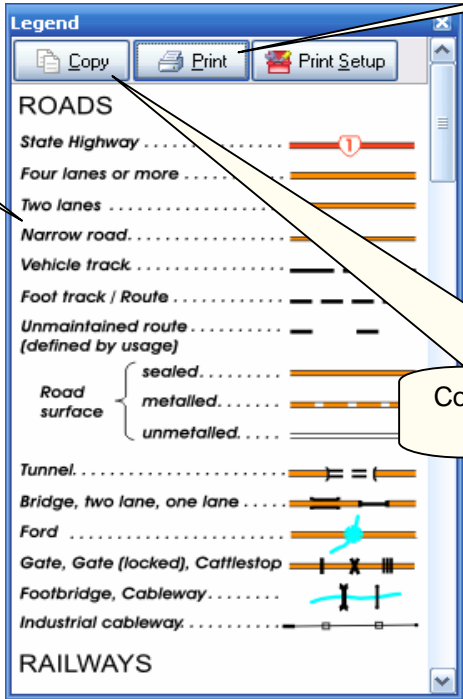
OVERVIEW WINDOW



PRINT DIALOG

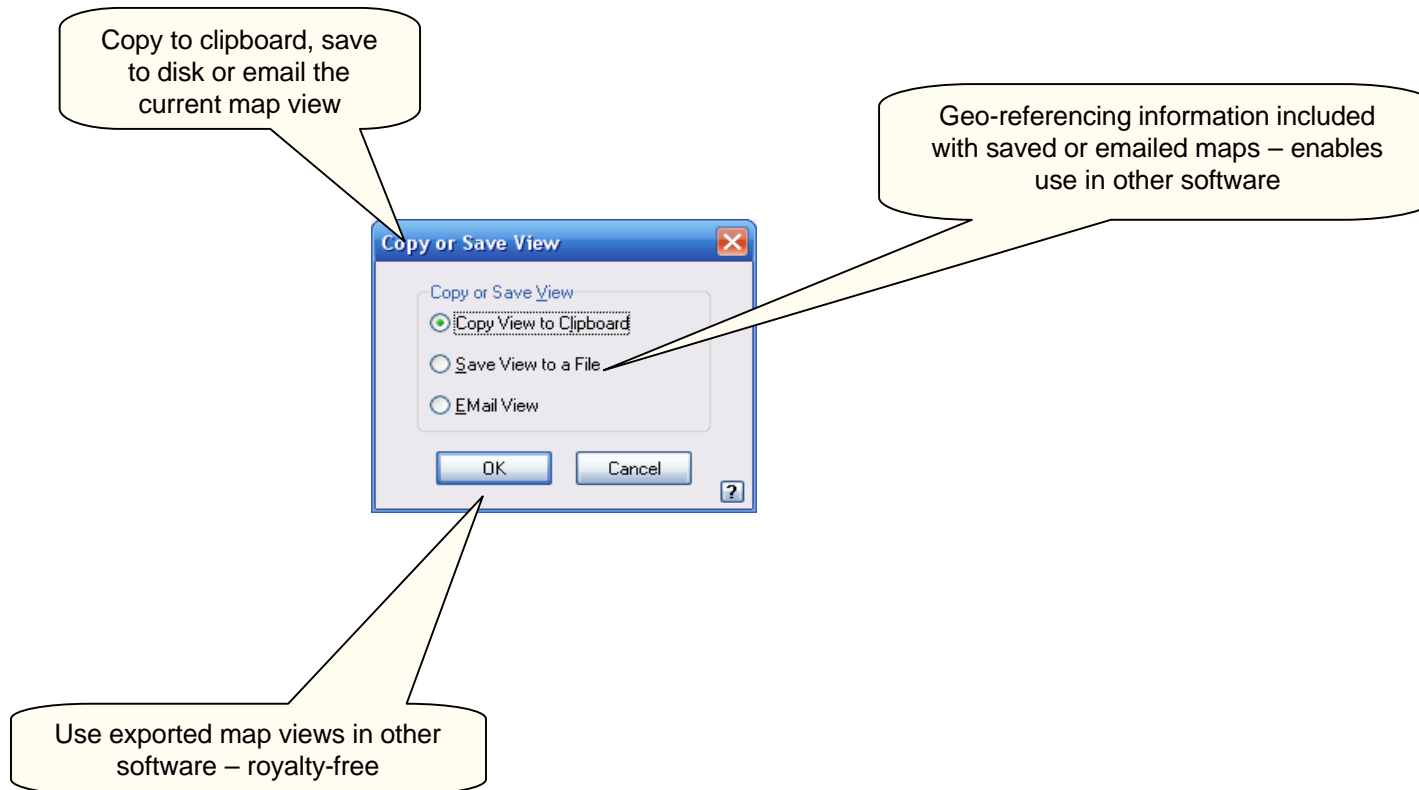
Correct legend automatically shown for the selected map series

Print legend



Copy legend to clipboard or save to disk

LEGEND



COPY / SAVE / EMAIL A MAP

The image displays two screenshots of a software 'Setup' dialog box, with callout boxes explaining various options.

Left Screenshot (Map Display tab):

- Display Coordinates:**
 - New Zealand Map Grid (NZMG)
 - Longitude/Latitude - WGS84 datum (ddd mm.mmm)
 - Longitude/Latitude - WGS84 datum (ddd.ddddd)
 - New Zealand Transverse Mercator (NZTM)
- Distance Units:**
 - Metric
 - Statute Miles
 - Nautical Miles
- Headings:**
 - True North
 - Magnetic North
- Display Speed/Quality:**
 - Best Quality
 - Fastest Drawing
 - Fast - Original Scale

Right Screenshot (Options tab):

- Map Options:**
 - Change Map Series Automatically When Zooming In/Out
 - Enable Map Overlays on Aerial Photos
 - Double-click on Point Shows Pocket Query Info if Present
- General Options:**
 - Display Hint balloons
 - Show Toolbar Labels
- Load Places and Tracks on Startup:**
 - Places File:
 - Tracks File:

Callout Boxes:

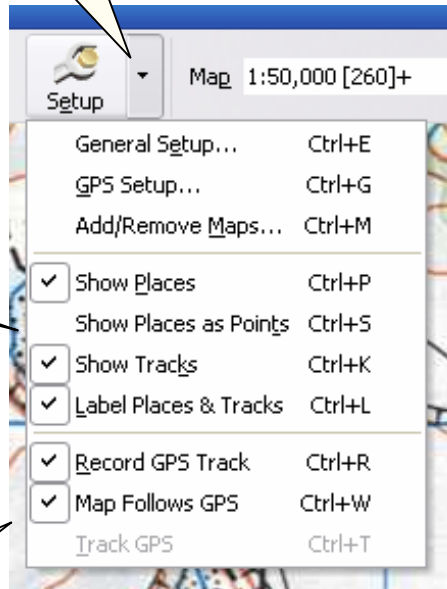
- NZ & lat/long coordinate systems** (points to NZMG and WGS84 options)
- Metric or old-fashioned units** (points to Metric and Statute Miles options)
- True and magnetic headings** (points to True North and Magnetic North options)
- Map rendering options – optimise for printing and export** (points to Best Quality, Fastest Drawing, and Fast - Original Scale options)
- Automatically selects best map series for scale** (points to the 'Change Map Series Automatically When Zooming In/Out' checkbox)
- Transparent topomaps overlaid on aerial and satellite images** (points to the 'Enable Map Overlays on Aerial Photos' checkbox)
- Geo-caching Pocket Query support** (points to the 'Double-click on Point Shows Pocket Query Info if Present' checkbox)
- Automatically load track and waypoint files on startup** (points to the 'Places File' and 'Tracks File' fields)

SETUP DIALOG

Setup menu for frequently accessed items

Control display of points, tracks and labels

GPS real-time tracking options – record the the track, map follows the GPS position etc



SETUP MENU

Tracks grid stores track, coordinates, times, speed and distances of tracks.

Click on grid to edit info

Sort and filter by clicking headings

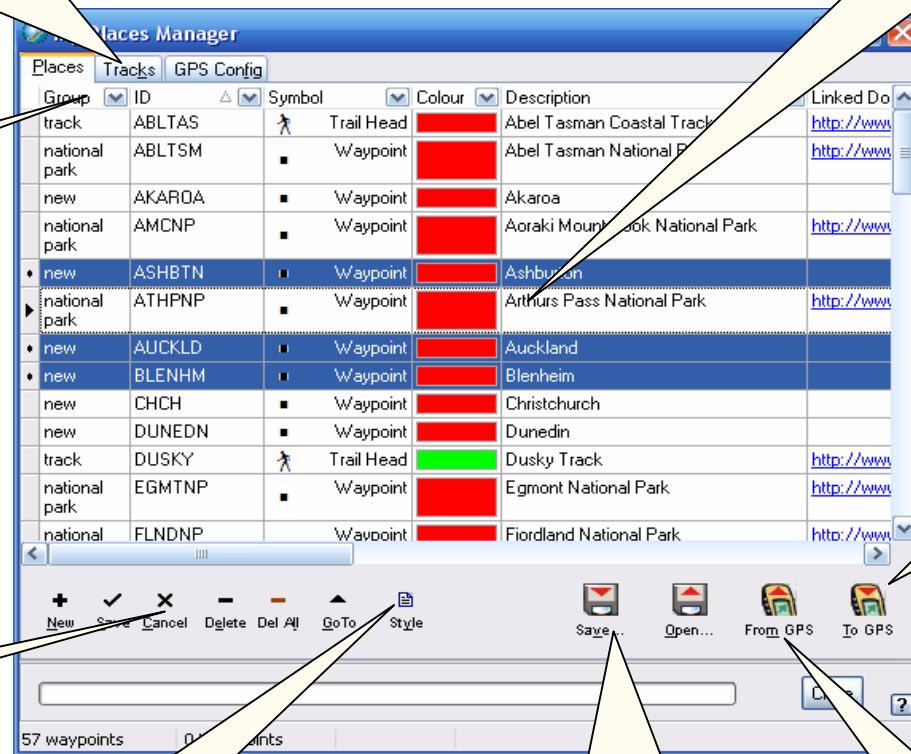
Upload all places, or just selected places, places in the selected group, or just those places in the current view

Add & delete selected waypoints

Change colour and symbols on *all* selected rows, in one go

Save and load from disk – supports Text, GPX, .LOC, MapInfo, Excel & NMEA formats

Download from GPS and merge with points already in grid



MY PLACES GRID

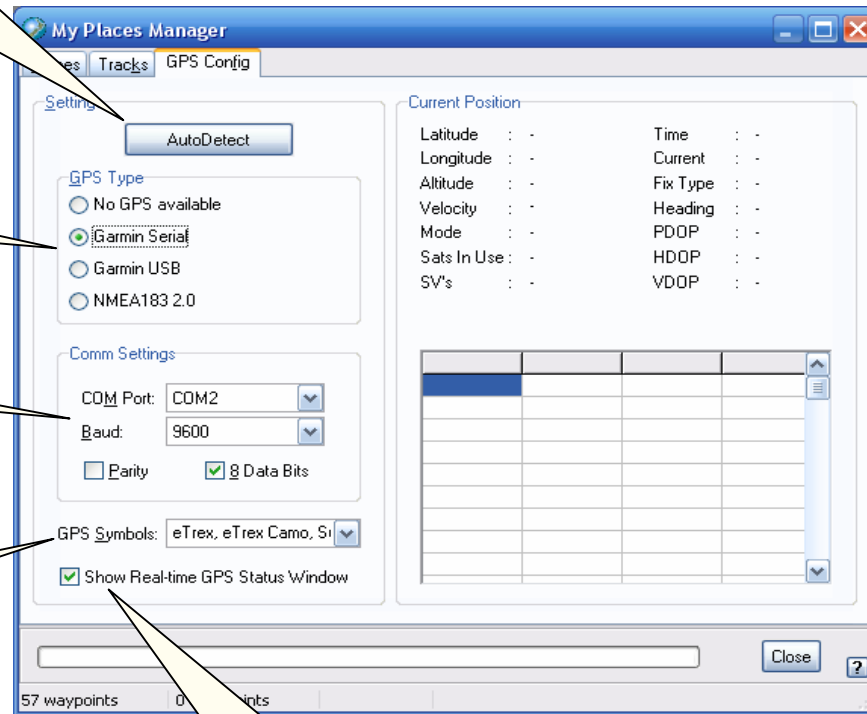
Easy setup – connect your GPS and click this button and you're done

Manual override – select your GPS type

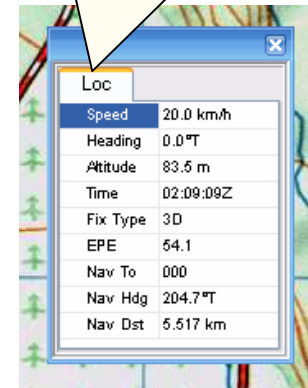
COM Port settings

Select the symbol set that you want to work with

See a status window while real-time tracking is running



Real-time status window shows current data, when real-time tracking is enabled. Tracks recorded in the Tracks grid



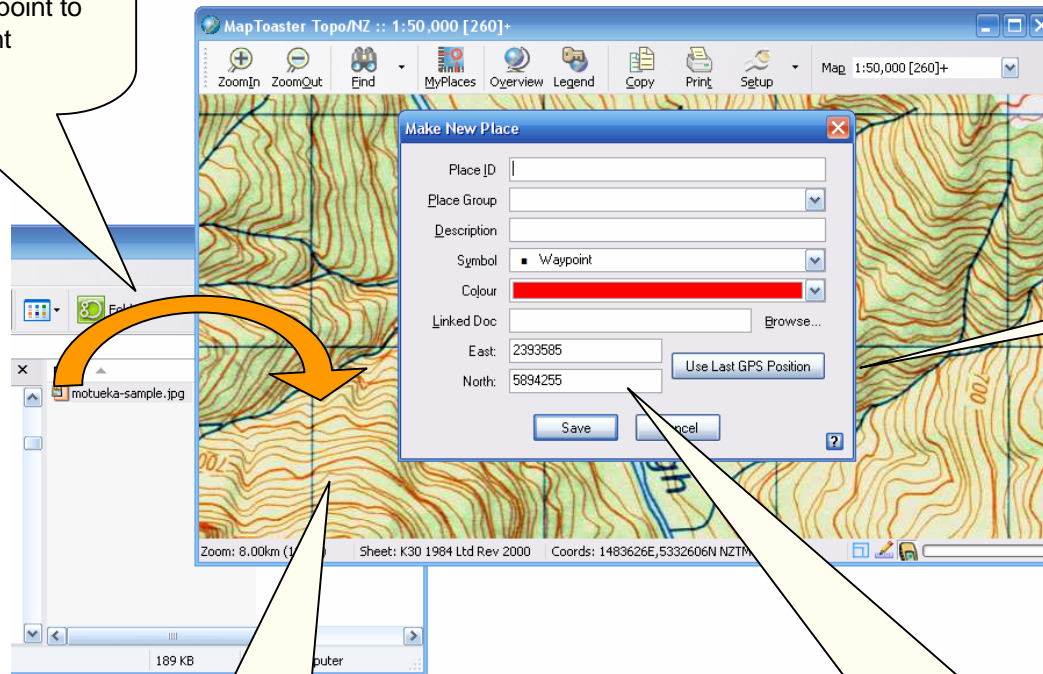
GPS SETUP

1 Drag a file from Windows Explorer and drop it on the correct spot on the map. The file can be any type, e.g. photo, Word Excel etc. Double-click on the point to open the document

2 Right-click on the map and select *Make New Place* from the menu

3 Type the NZMG or lat/long coords in by hand – software figures out which type you used

4 Grab the last GPS position



WAYS TO MAKE A PLACE/WAYPOINT

Enter the time shown on the GPS display

The time on your digital camera – at the same moment

	Date	Time	Time Zone
GPS Display	26/11/2003	15:01:02	NZ Daylight (+13)
Camera	26/11/2003	15:01:06	

Wizard automatically creates Places/waypoints for each photo. Double-click on the point on the map and the photo opens

LINKING PHOTOS TO THE MAP